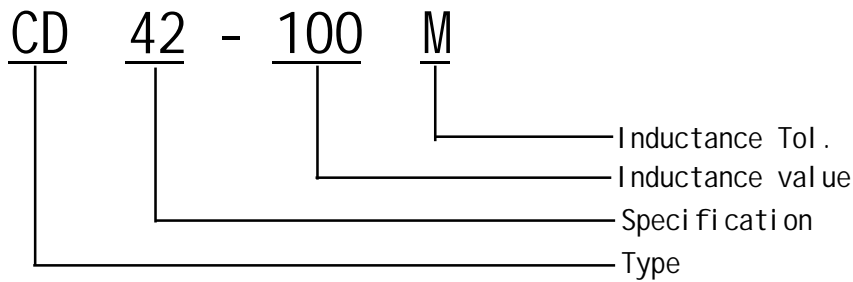


SMD Power Inductors CD42 Series

贴片功率电感CD42 系列



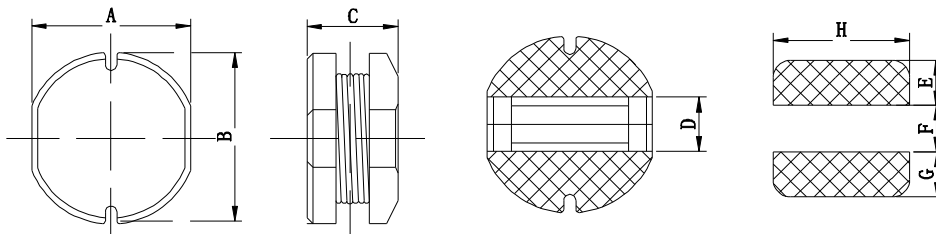
I. Ordering Code:



※ Inductance Tol. J: $\pm 5\%$, K: $\pm 10\%$, M: $\pm 20\%$, N: $\pm 30\%$.

※ Inductance value. 1R0: 1.0uH, 100: 10uH, 101: 100uH, 102: 1000uH.

II. Configuration&Dimensions: (mm)



Size	A	B	C(max)	D	E	F	G	H
CD42	4.00 \pm 0.30	4.50 \pm 0.30	2.30	1.50	1.80	1.20	1.80	4.50

III. Materials :

- Core: Ferrite DR core
- Wire: Enamelled copper wire
- Terminal: Cu/Sn
- Encapsulate: Epoxy novolac molding compound
- Remark: Products comply with RoHS' requirements

IV. General Specification :

- Storage temp. : -40 $^{\circ}$ C----+125 $^{\circ}$ C
- Operating : -40 $^{\circ}$ C----+105 $^{\circ}$ C
- Temp. rise : 40 $^{\circ}$ C Max. at rated current.



Specifications subject to change without notice. Please check our website for latest information. Released: 2012/12/18

Danxingda Shenzhen.China Tel: 0755-61303918 Fax: 0755-83462232 Web: <http://www.mydxd.com> E-mail: lareina@mydxd.com



CD42 Series

Part No.	L (uH)	Test Freq .(KHZ)	Tolerance	D.C.R(Ω)	Rated Current
				MAX	(A)
CD42-1R2N	1.20	100K/0.25V	$\pm 30\%$	22.0m	1.25
CD42-1R5N	1.50	100K/0.25V	$\pm 30\%$	25.0m	1.20
CD42-4R7M	4.7	100K/0.25V	$\pm 20\%$	72.0m	0.642
CD42-5R6M	5.6	100K/0.25V	$\pm 20\%$	81.0 m	0.600
CD42-6R8M	6.8	100K/0.25V	$\pm 20\%$	0.100	0.562
CD42-8R2M	8.2	100K/0.25V	$\pm 20\%$	0.107	0.517
CD42-100M	10.0	1.0K/0.25V	$\pm 20\%$	0.143	0.451
CD42-120M	12.0	1.0K/0.25V	$\pm 20\%$	0.163	0.400
CD42-150M	15.0	1.0K/0.25V	$\pm 20\%$	0.195	0.390
CD42-180M	18.0	1.0K/0.25V	$\pm 20\%$	0.247	0.333
CD42-220M	22.0	1.0K/0.25V	$\pm 20\%$	0.300	0.312
CD42-270M	27.0	1.0K/0.25V	$\pm 20\%$	0.338	0.278
CD42-330M	33.0	1.0K/0.25V	$\pm 20\%$	0.420	0.250
CD42-390M	39.0	1.0K/0.25V	$\pm 20\%$	0.495	0.240
CD42-470M	47.0	1.0K/0.25V	$\pm 20\%$	0.618	0.210
CD42-560M	56.0	1.0K/0.25V	$\pm 20\%$	0.728	0.193
CD42-680M	68.0	1.0K/0.25V	$\pm 20\%$	0.870	0.189
CD42-820M	82.0	1.0K/0.25V	$\pm 20\%$	1.03	0.166
CD42-101M	100.0	1.0K/0.25V	$\pm 20\%$	1.37	0.155
CD42-121M	120.0	1.0K/0.25V	$\pm 20\%$	1.53	0.146
CD42-151M	150.0	1.0K/0.25V	$\pm 20\%$	1.87	0.121
CD42-181M	180.0	1.0K/0.25V	$\pm 20\%$	2.34	0.108
CD42-221K	220.0	1.0K/0.25V	$\pm 10\%$	2.73	97.2m
CD42-271K	270.0	1.0K/0.25V	$\pm 10\%$	3.61	93.6m
CD42-331K	330.0	1.0K/0.25V	$\pm 10\%$	4.32	82.8m
CD42-391K	390.0	1.0K/0.25V	$\pm 10\%$	5.4	73.8m
CD42-471K	470.0	1.0K/0.25V	$\pm 10\%$	6.33	68.5m

VI. 额定电流 Reted Current:

电感值下降至初始值的10%或温度上升至40℃时的直流电流值中的最小值。(环境温度20℃)

This indicates the value of current when the inductance is 10% lower than its initial value at D.C. superposition or D.C. current when T=40℃ whichever is lower. (Ta=20℃)

VII. 无铅制品 Lead-free

VIII. 测试仪器 Test instrument : HP4284A, 502BC, CH1062A.



Specifications subject to change without notice. Please check our website for latest information. Released: 2012/12/18

Danxingda Shenzhen.China Tel: 0755-61303918 Fax: 0755-83462232 Web:http://www.mydxd.com E-mail: laireina@mydxd.com